

# Transition of Lithuanian Universities in the Process of Creating of Common HEA in Europe

---

Dr. Rimantas Vaitkus,  
Vice-Rector of Mykolas Romeris University,  
Ateities Str. 20, Vilnius, Lithuania  
[rvaitkus@mruni.lt](mailto:rvaitkus@mruni.lt),  
[www.mruni.lt](http://www.mruni.lt)

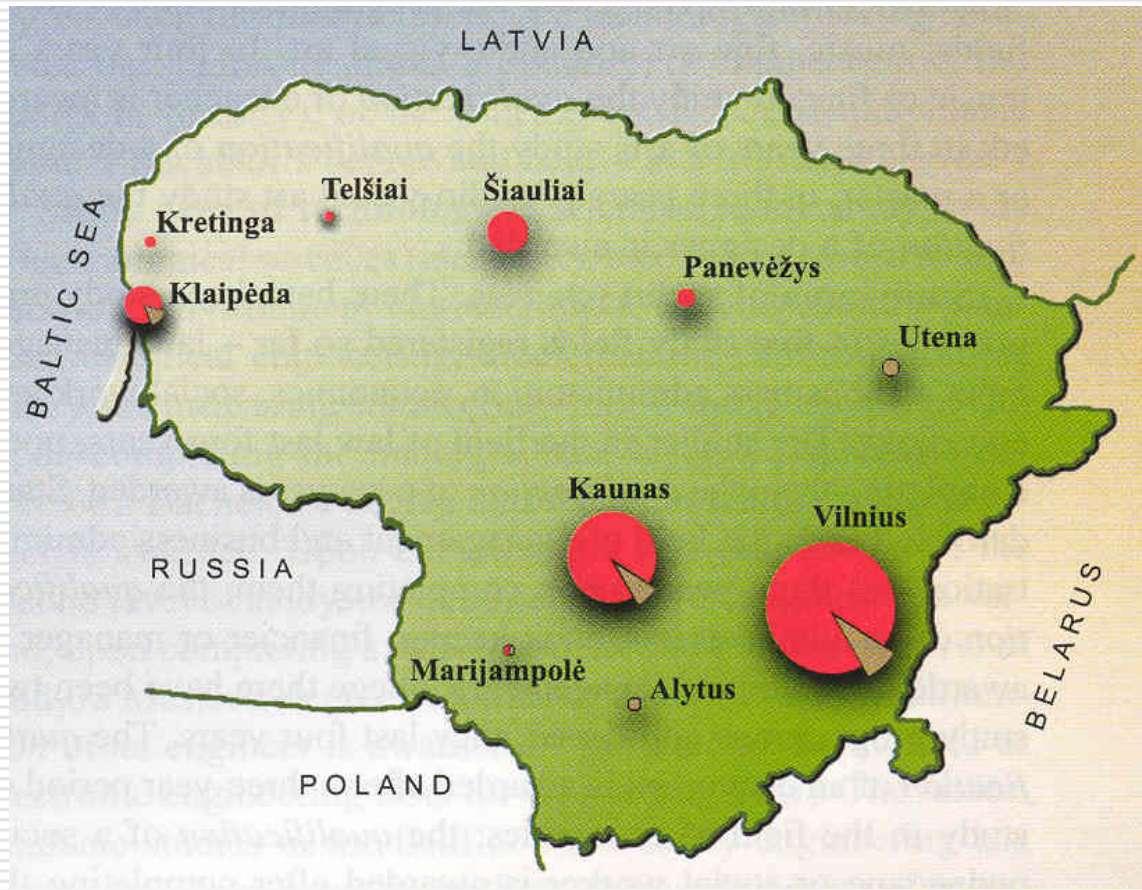
# Higher Education and Research Institutions in Lithuania

---

- ❑ State Universities (15)
- ❑ Private Universities (6)
- ❑ State (16) and Private (11) Colleges
- ❑ State Research Institutes (17)
- ❑ University Research Institutes (18)
- ❑ Other Research Establishments
- ❑ Private Business Entities

# Universities and Colleges in Lithuania

---



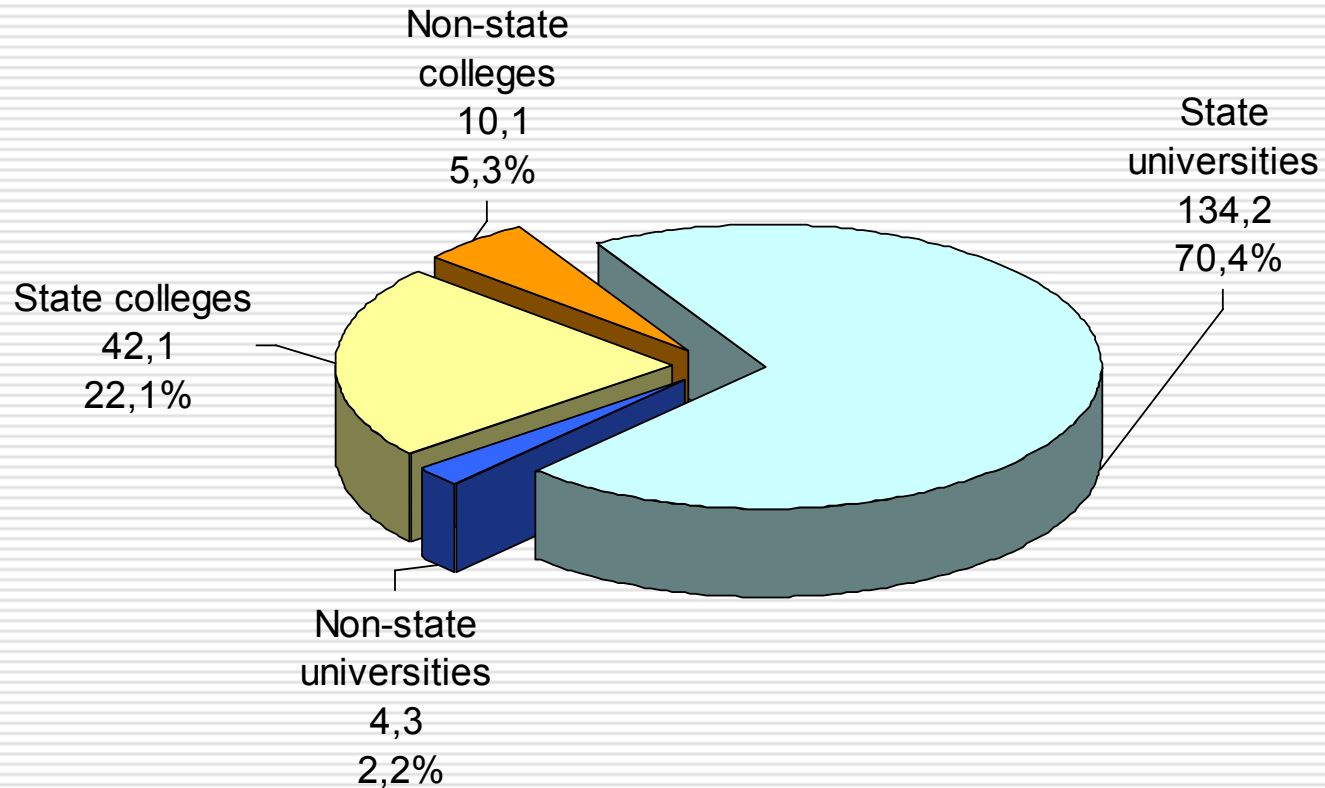
# Profile of Higher Education in Lithuania

---

- Undergraduate (bachelor degree, professional diploma), duration at least 3 years (120 credits) (for colleges, professional qualification) or at least 3,5 year (140 credits) for Bachelor degree or (and) professional qualification; 1 credit – 40 hours of work load.
- Graduate (master degree, professional diploma – only at universities) (at least 1,5 year, 60 credits). Some undergraduate and graduate programmes might be combined (total duration at least 5 years or 200 credits);
- Doctoral studies (3-4 years) or aspirancy for arts (2 years). Doctoral degree might be awarded only after defending of thesis.

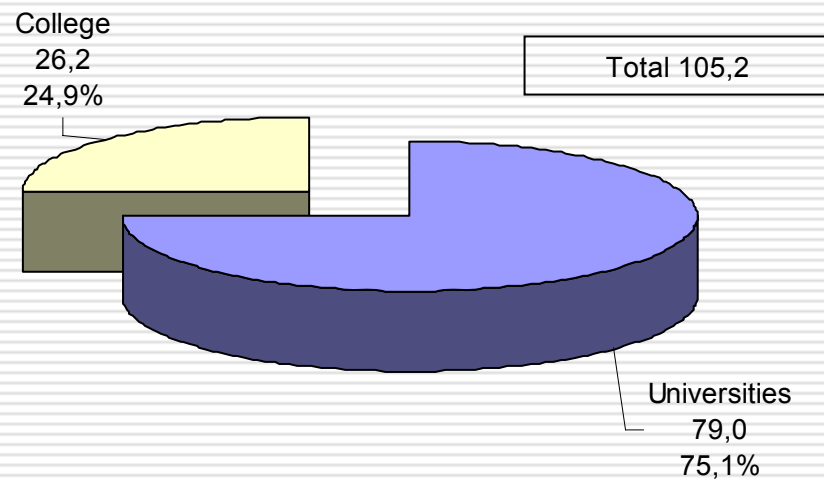
# Number of students, 2005 (thousands from total 190,7 thous.)

---



# State financed students

---



# Funding of research and studies LT

---

- Total budget for studies and research exceeds 660 mln. Lt (192 mln. €, 1€ = 3.45 LTL) for universities, 530 mln. LTL comes from the state (in 2005), which is distributed as follows:
  - 57 percent of the total budget – for studies, based on number of students;
  - 20 percent for running costs;
  - 23 percent for research (together with scientific institutes), based on performance.
- Colleges are receiving 120 mln. LTL

## Comparison of financing (% of GDP)

---

□ USA	3,2%	of them	1,5%	state
□ Japan	1,1%	of them	0,5%	state
□ EU	1,3%	of them	1,1%	state
□ Lithuania	1,3%	of them	0,9%	state
■ Universities	1,0 %	of them	0,7%	state
■ Colleges	0,3 %	of them	0,2%	state



# Main challenges for universities

---

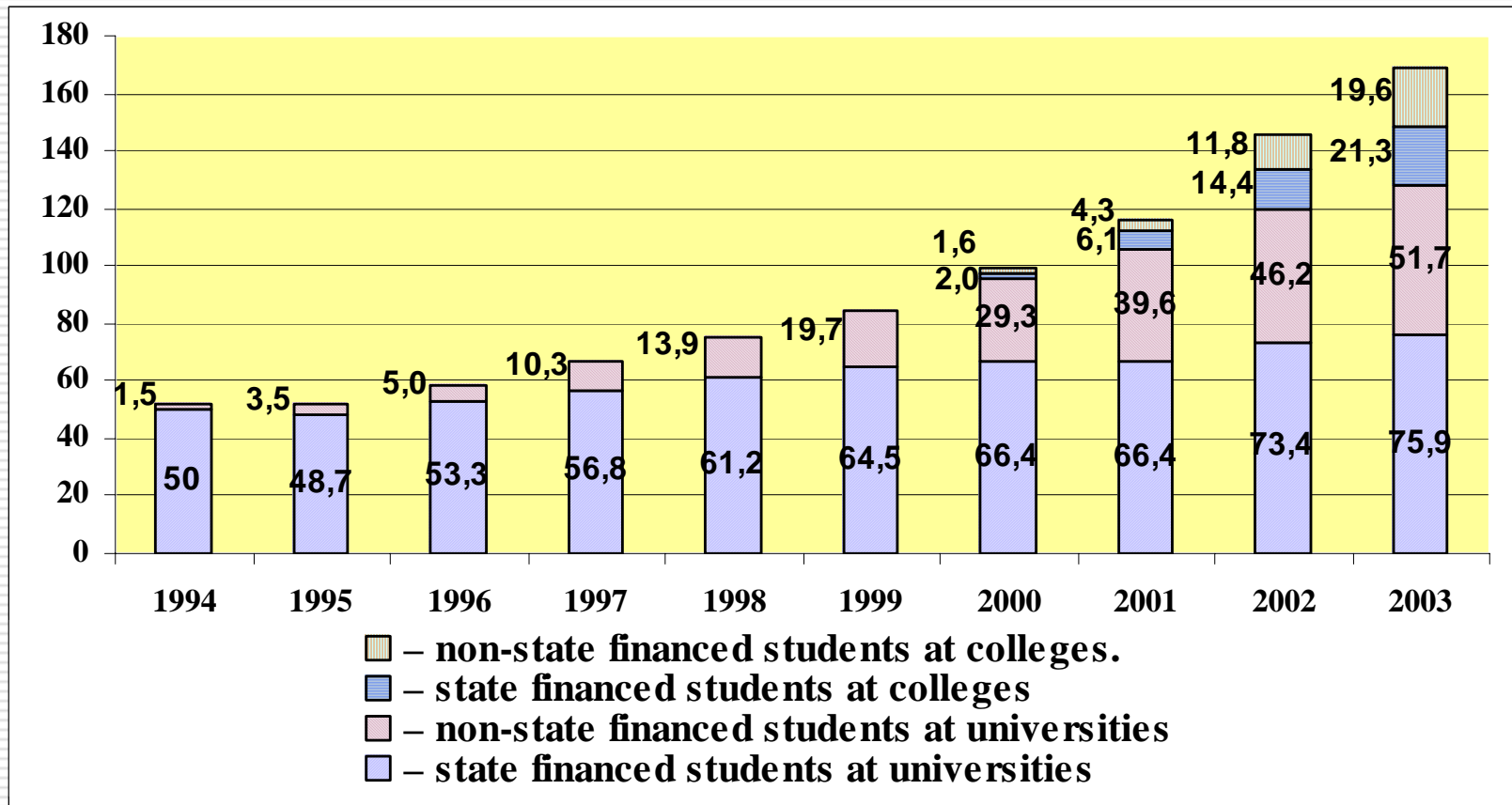
- Accessibility;
- Quality of education;
- Effectiveness of management of resources

# Measures to increase accessibility

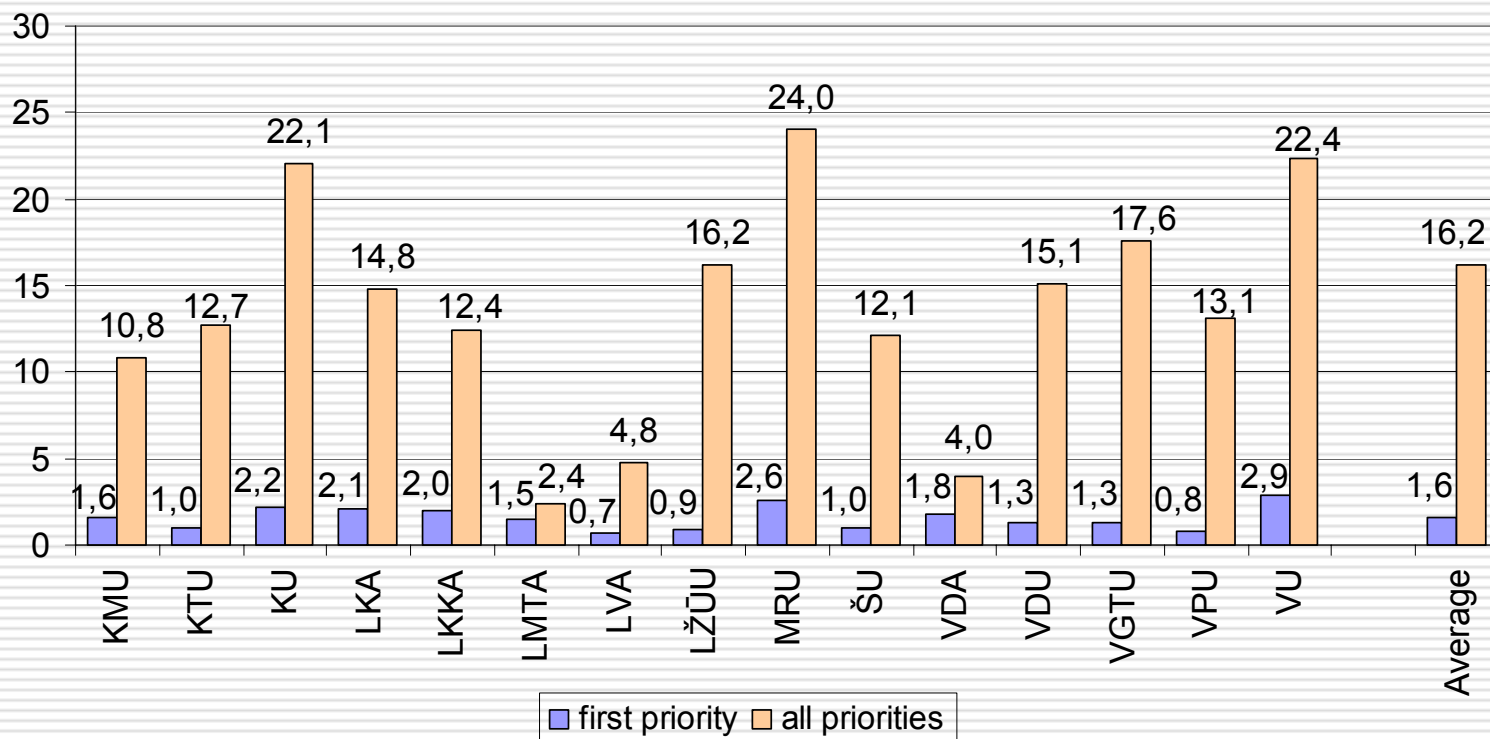
---

- ❑ Wide distribution of the HEI across the country: universities and colleges;
- ❑ Flexible studies: three cycle studies were implemented in 1993;
- ❑ New modes of studies: distance learning, study on module (credit) accumulation scheme;
- ❑ Transparent admission: Admission rules to HEI should be agreed both by HEI and the Ministry;
- ❑ Single centralised admission to the one of 20 different study programs (at different universities) from the list (student's choice);
- ❑ State financed places for day-time undergraduate students, 50% are free of charge, others pay fixed fee (500 LTL per semester, rotation);
- ❑ Grant and loan scheme for students;
- ❑ Fee scheme for evening courses, distance and Master students. Level of fee is approved by the Senate and accepted by the Minister (1500-6000 LTL per year);
- ❑ State regulation for the admission number of all students

# Students in Lithuania



# Competition per 1 study place



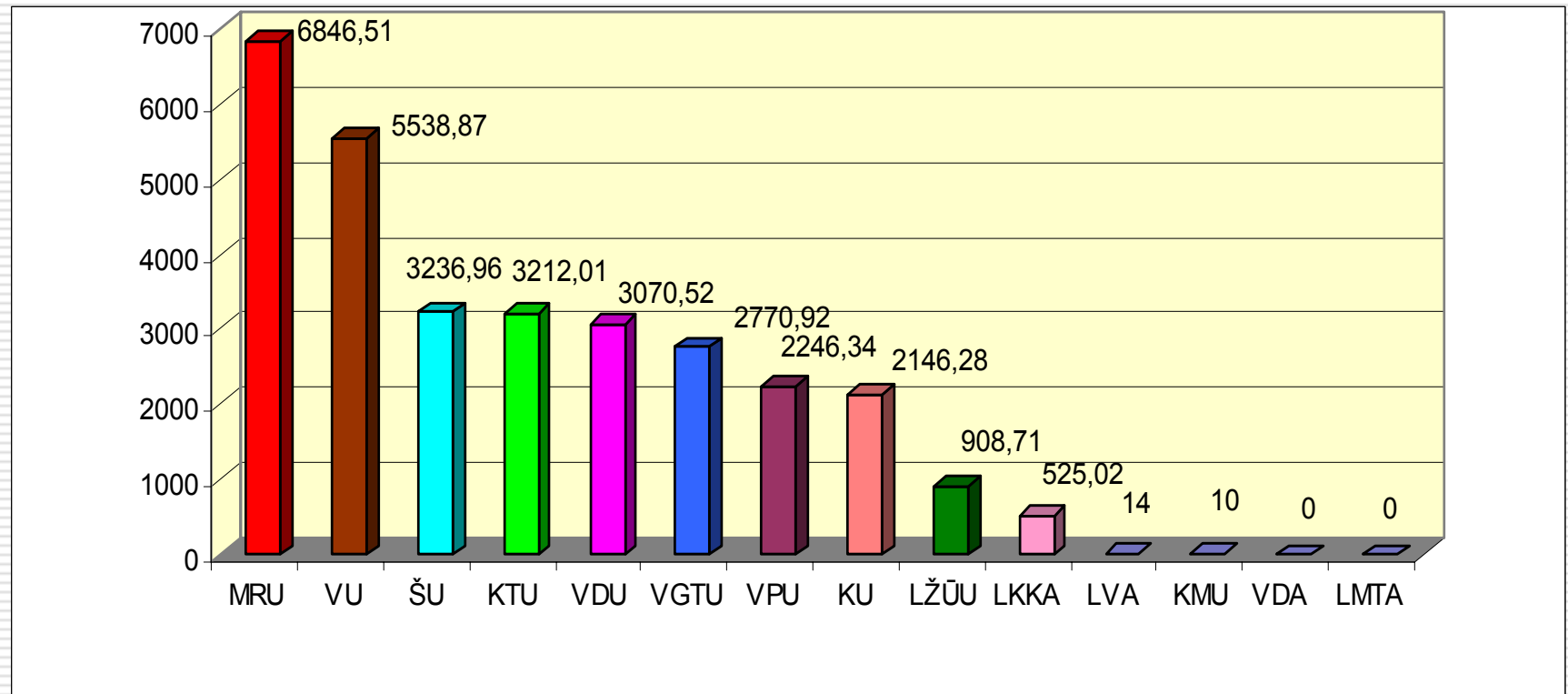
# Measures to improve the quality of education

---

- ❑ Improvement of human resources;
- ❑ Research conducted at HEI;
- ❑ Study programmes developed together with main stake-holders;
- ❑ Evaluation of study programmes and teaching process (internal and external);
- ❑ Investment to HEI;
- ❑ Foreign exchange;
- ❑ Carrier guidance for graduates;

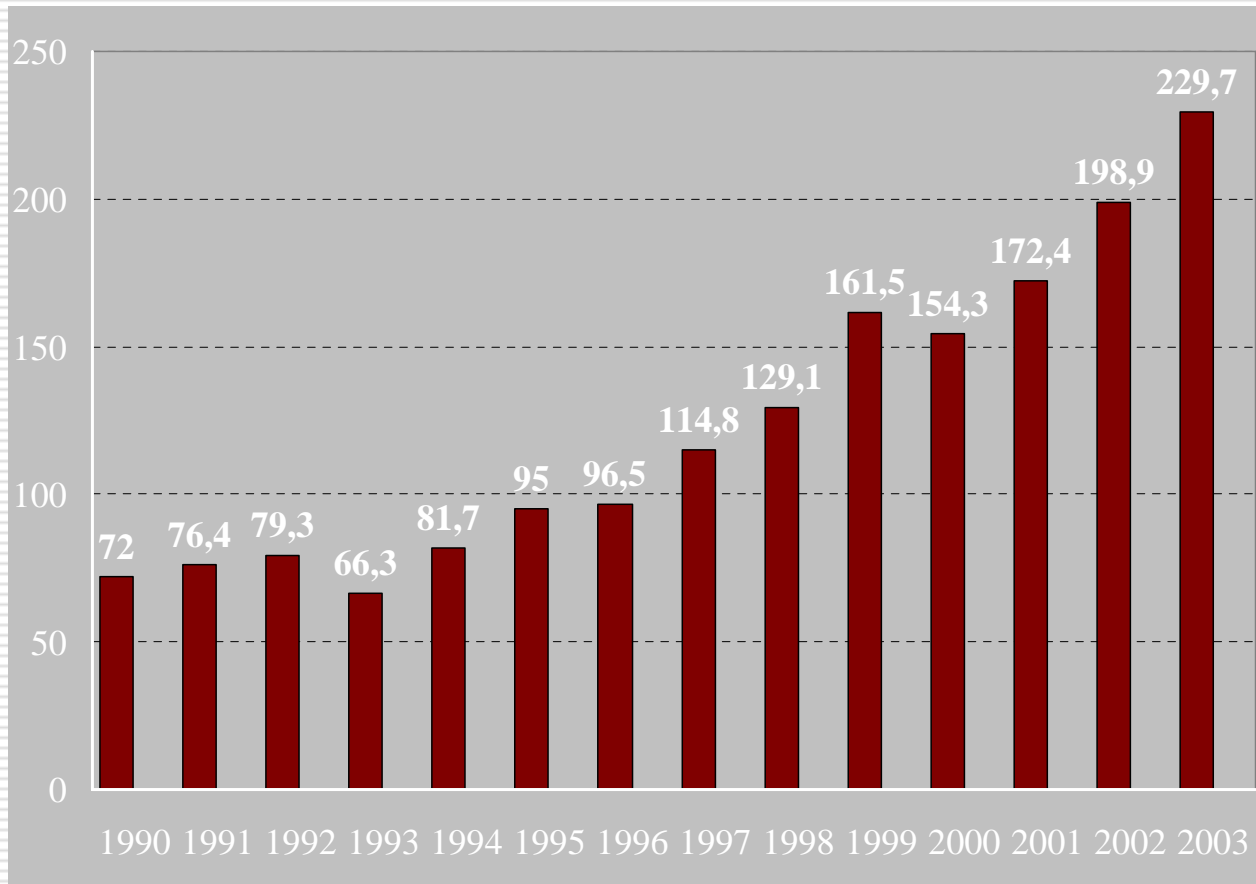
# Productivity in the field of social sciences in 2004 (points)

Date provided by the Ministry of Education and Science, 2005

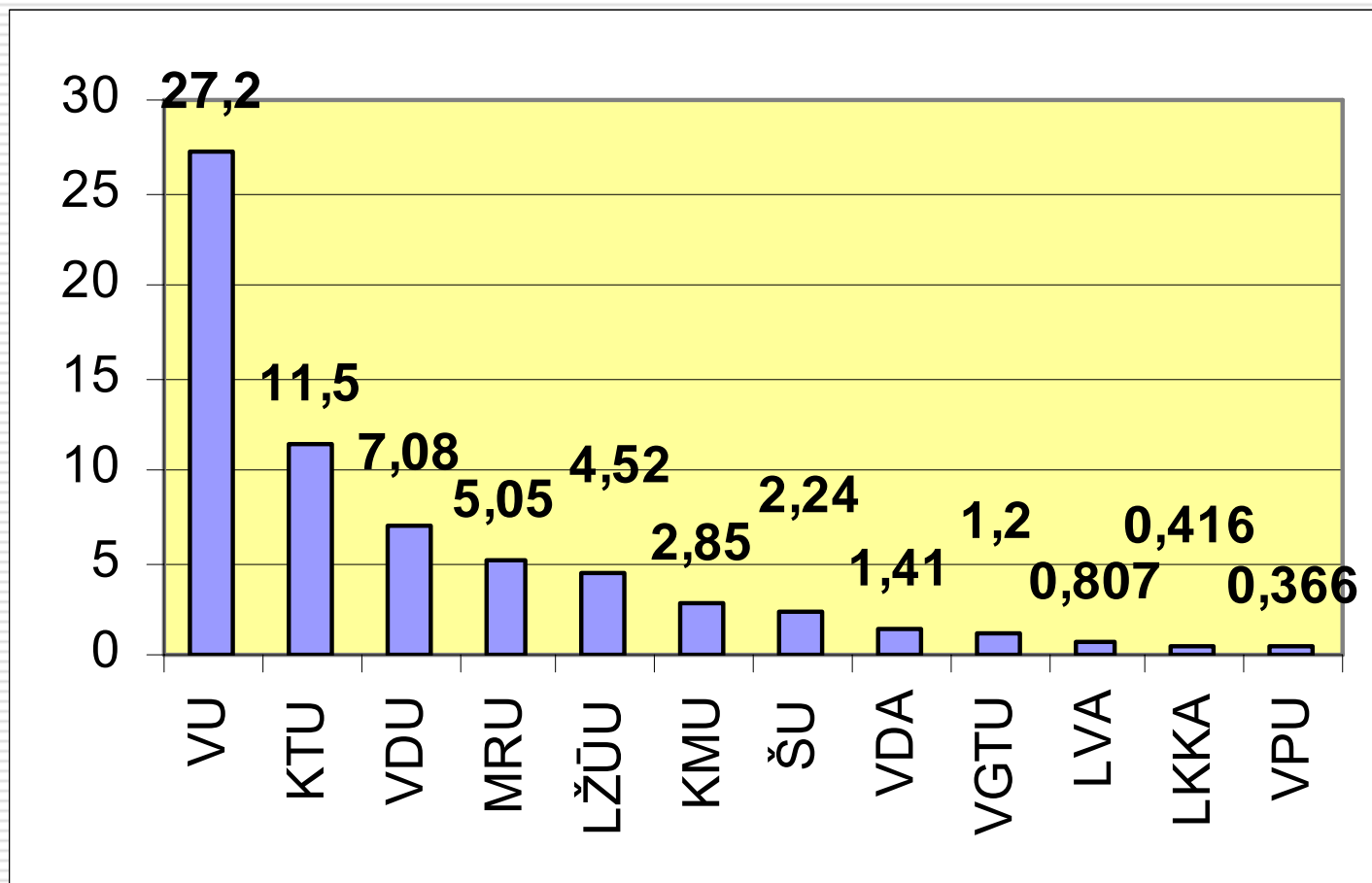


# Number of publications in foreign journals (ISI) (papers per 1 mln. inhabitants)

---



# Funding by European Social Fund for projects for Master and PhD studies (mln. LTL) 2005-2007





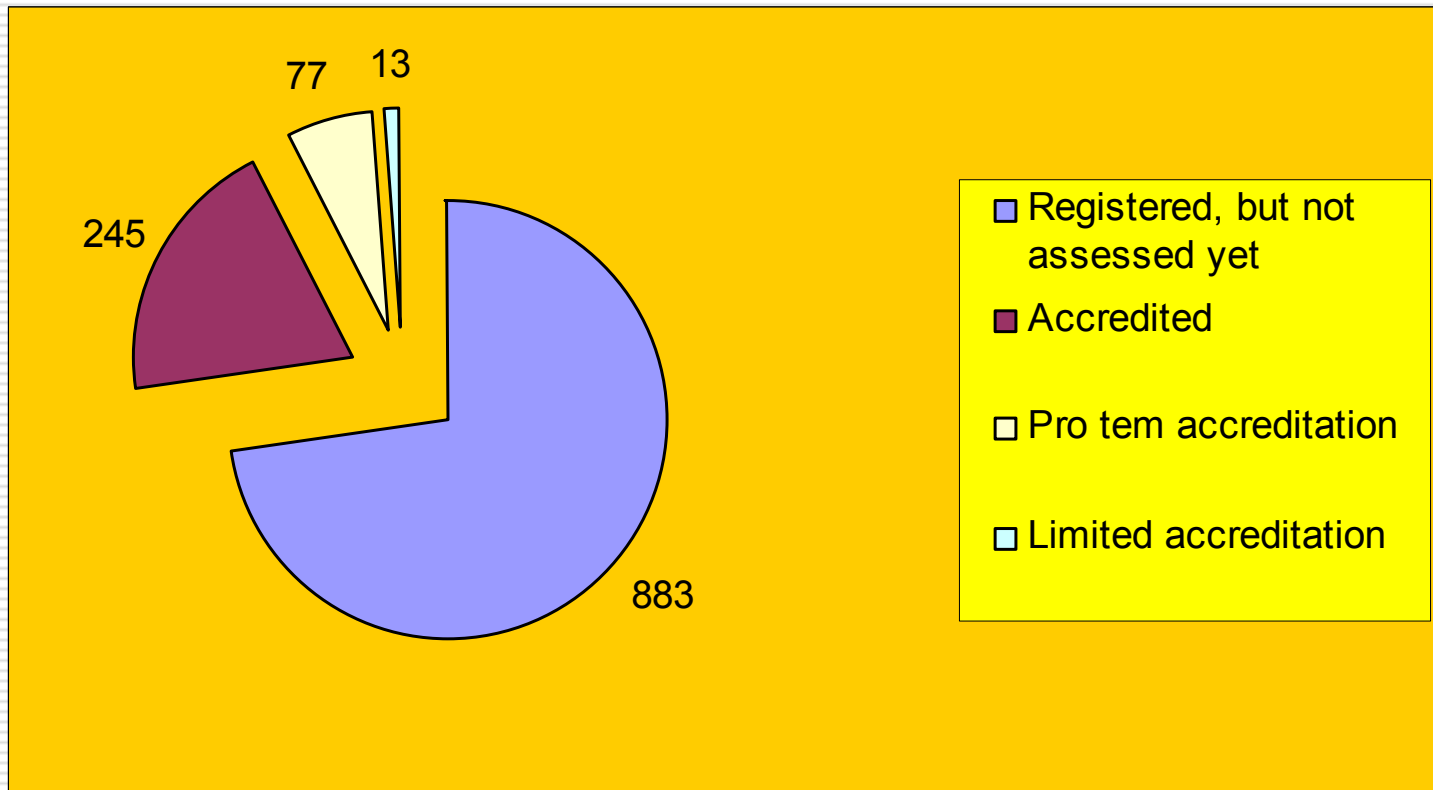
# Quality assurance in Lithuania

---

- ❑ **In 1995**, the Lithuanian Centre for Quality Assessment in Higher Education was established
- ❑ **In 1996**, the Register of Study and Teaching Programmes established, all study programmes of higher education institutions were registered
- ❑ **In 1997**, evaluation of newly introduced study programmes was started on a regular basis (prior registration)
- ❑ **In 1999**, expert external assessment of study programmes was started;
- ❑ **In 2001**, benchmarking of study branches (63) has started;
- ❑ **In 2005**, Rules for Master programmes were adopted
- ❑ **In 2005**, Diploma Supplement was approved

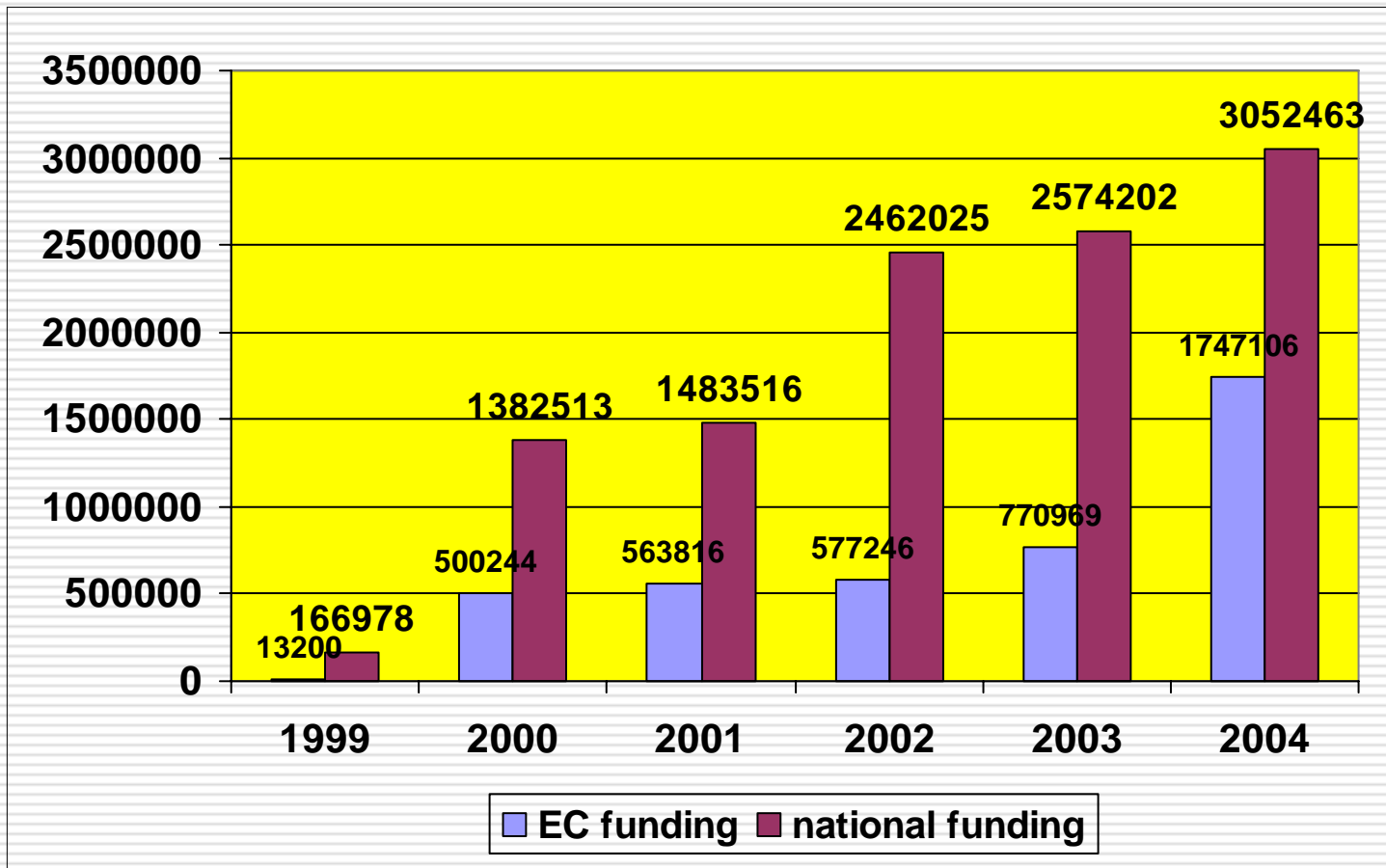
# Assessment of study programmes in Lithuanian HEI (2005)

---



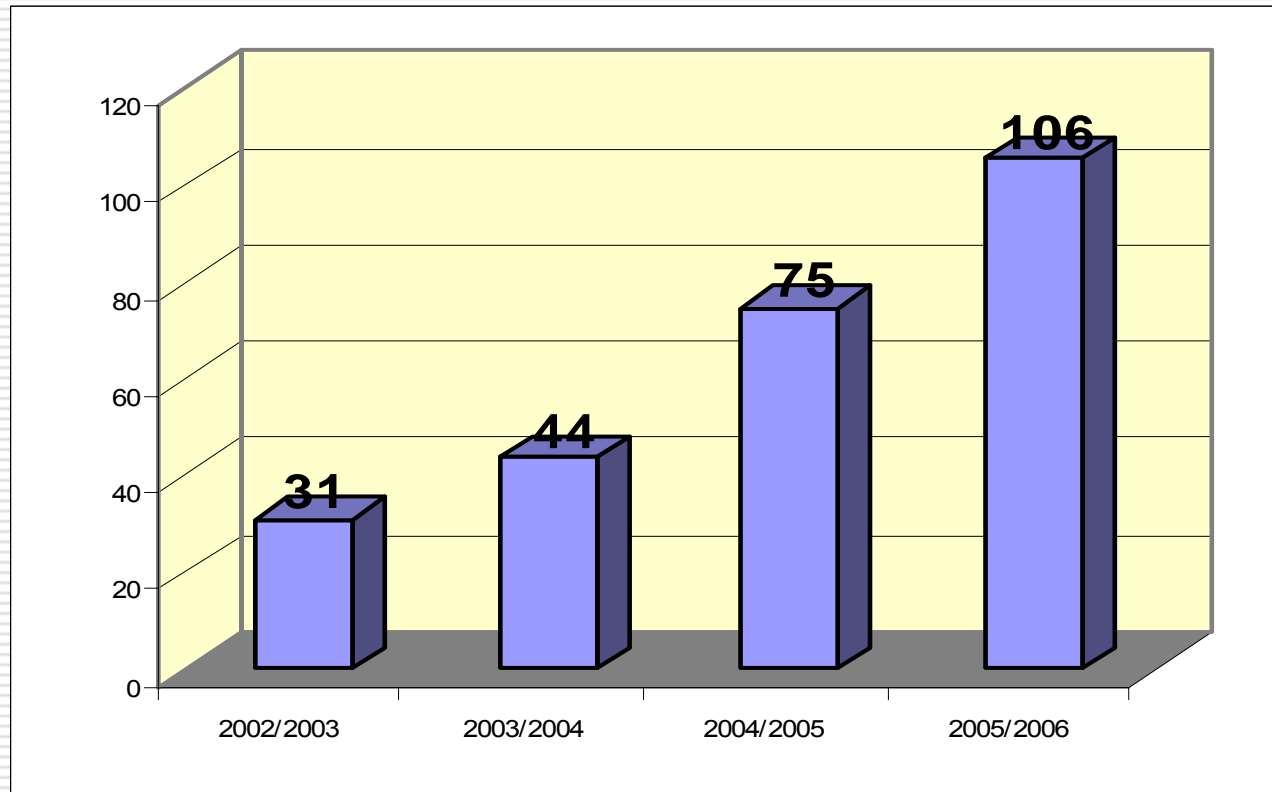
# Funding of Socrates – Erasmus activities in Lithuania, in €

---



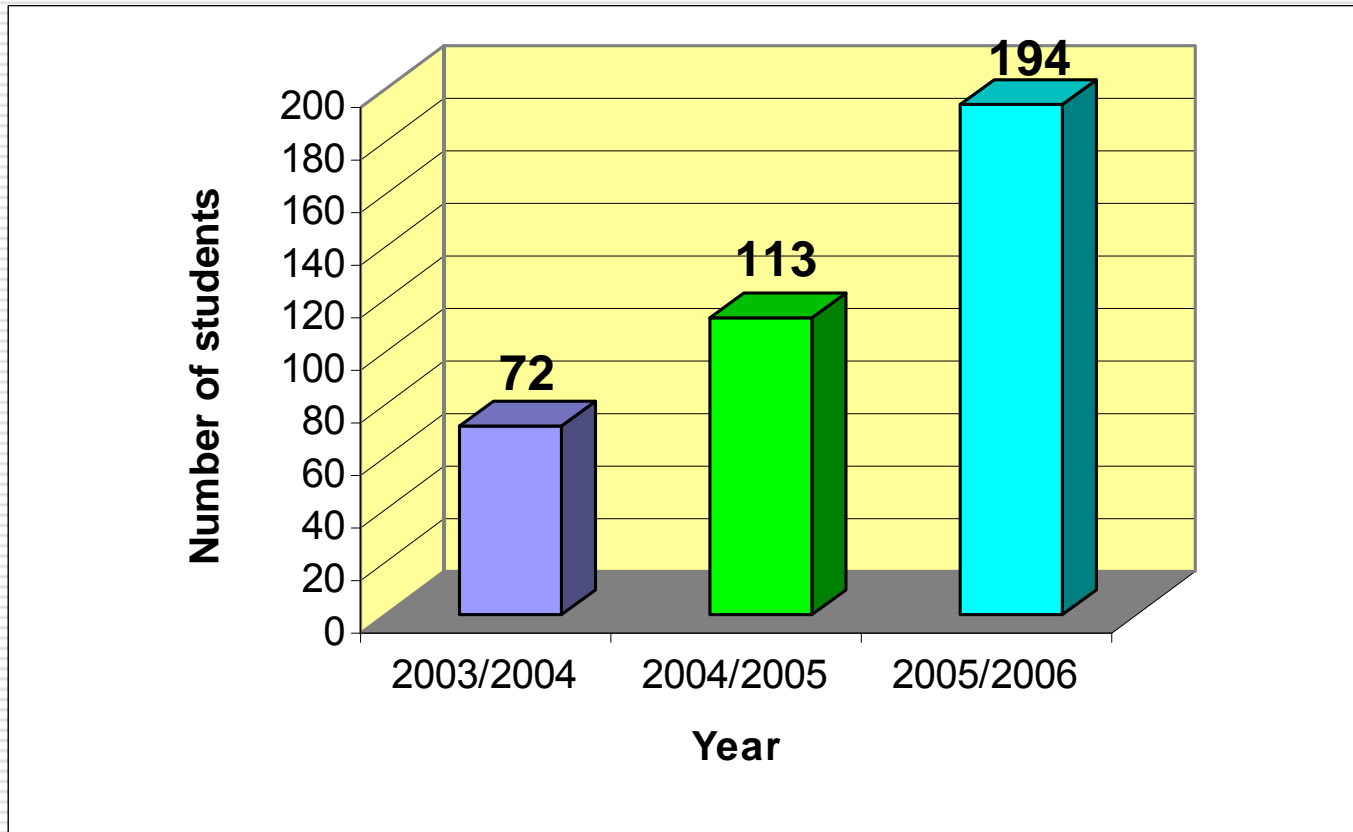
# Number of bi-lateral agreements for Socrates-Erasmus of Mykolas Romeris University

---

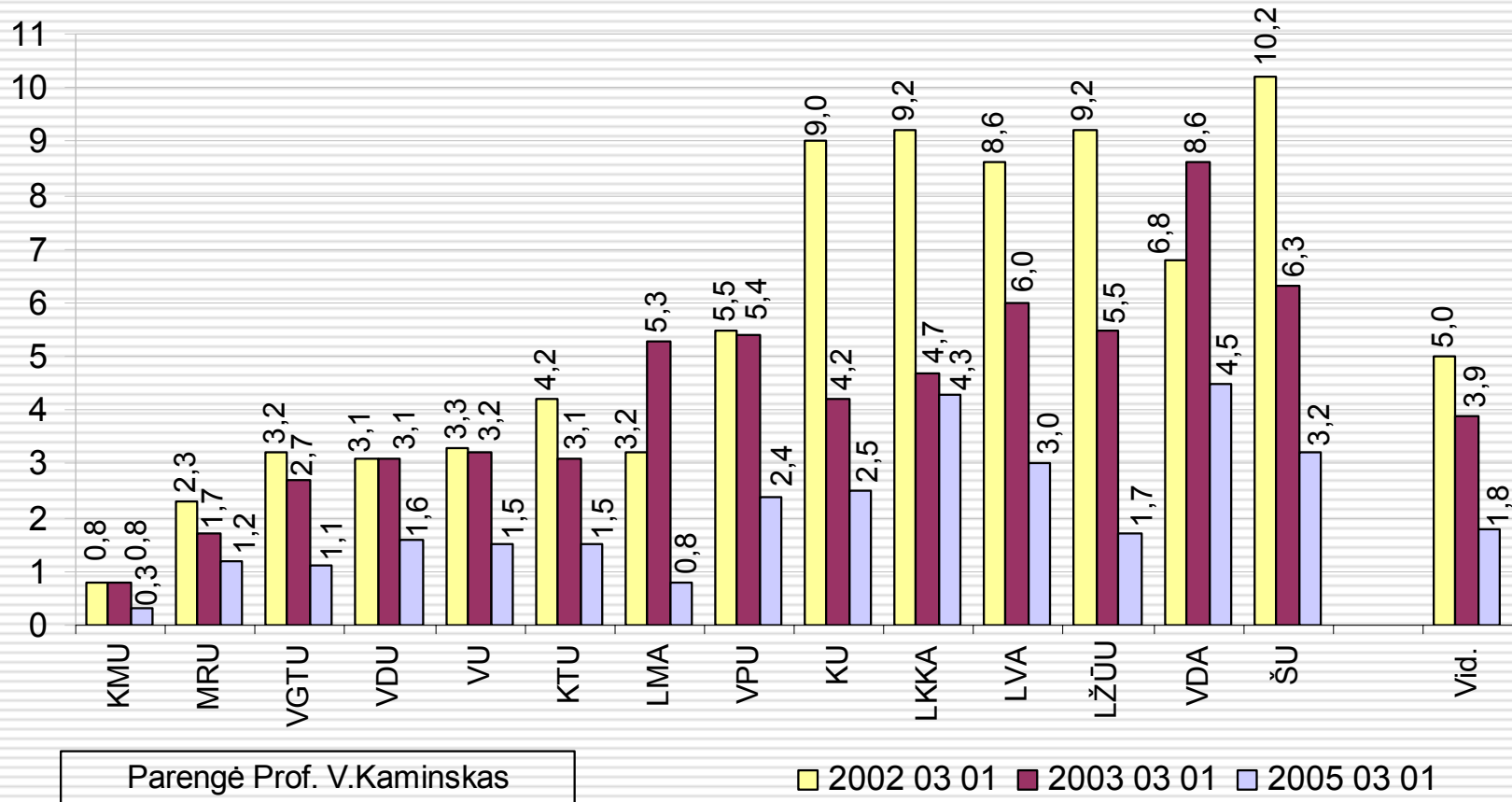


# Number of outgoing students (Erasmus) of Mykolas Romeris University

---



# Registered unemployed graduates of universities (percent of total number)

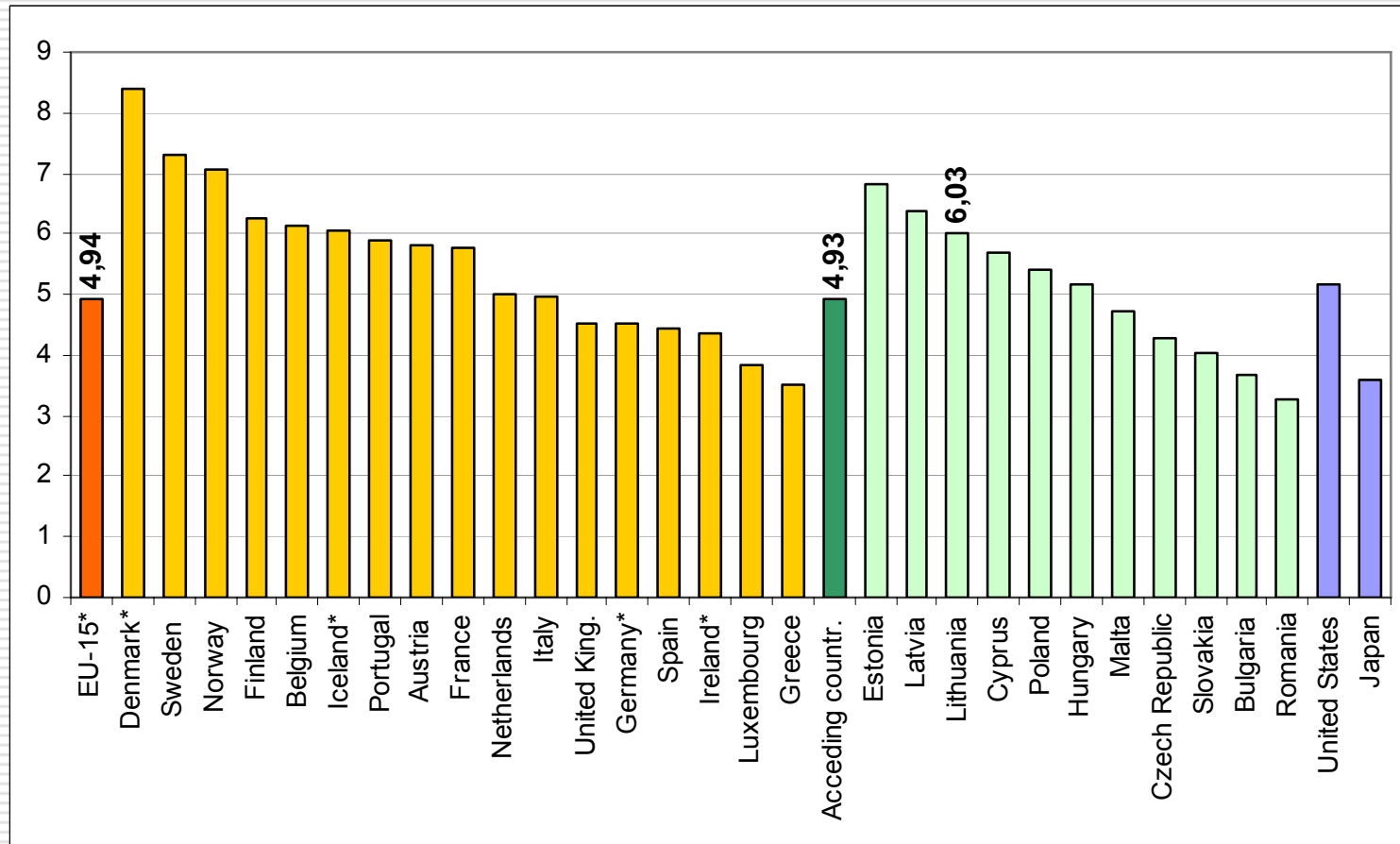


# Measures to increase effectiveness

---

- ❑ Funding by transparent formula;
- ❑ Funding by lump sum;
- ❑ To increase universities' entrepreneurship;
- ❑ Autonomy and accountability

# Funding of education, percent of GDP





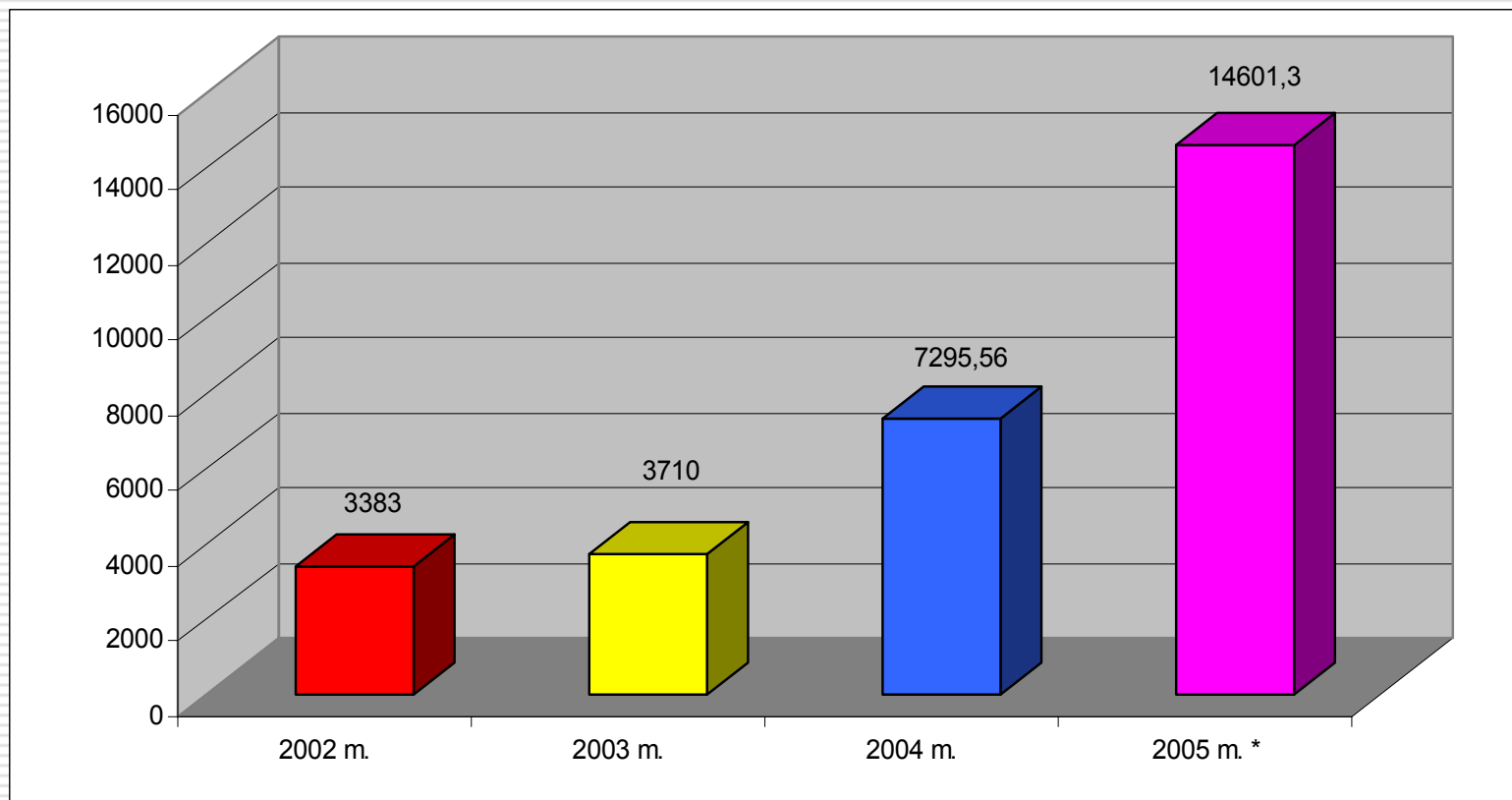
# Funding formula for universities

---

- Funding is divided into 3 main parts:
  - Funding for studies 57 percent;
  - Funding for research 23 percent;
  - Funding for administration and campus 20 percent;
- Studies are financed according to the number of students;
  - Number of admitted students and actual number of students is combined;
- Study price is different for different programmes (17 groups):
  - Salary for teachers (20 to 3 students per teacher) and technicians;
  - Funding for study materials;
- Research is financed according to the achievements (6 fields separately);
- Funding received by lump sum for only two types of expenditures:
  - Studies and research;
  - Student grants

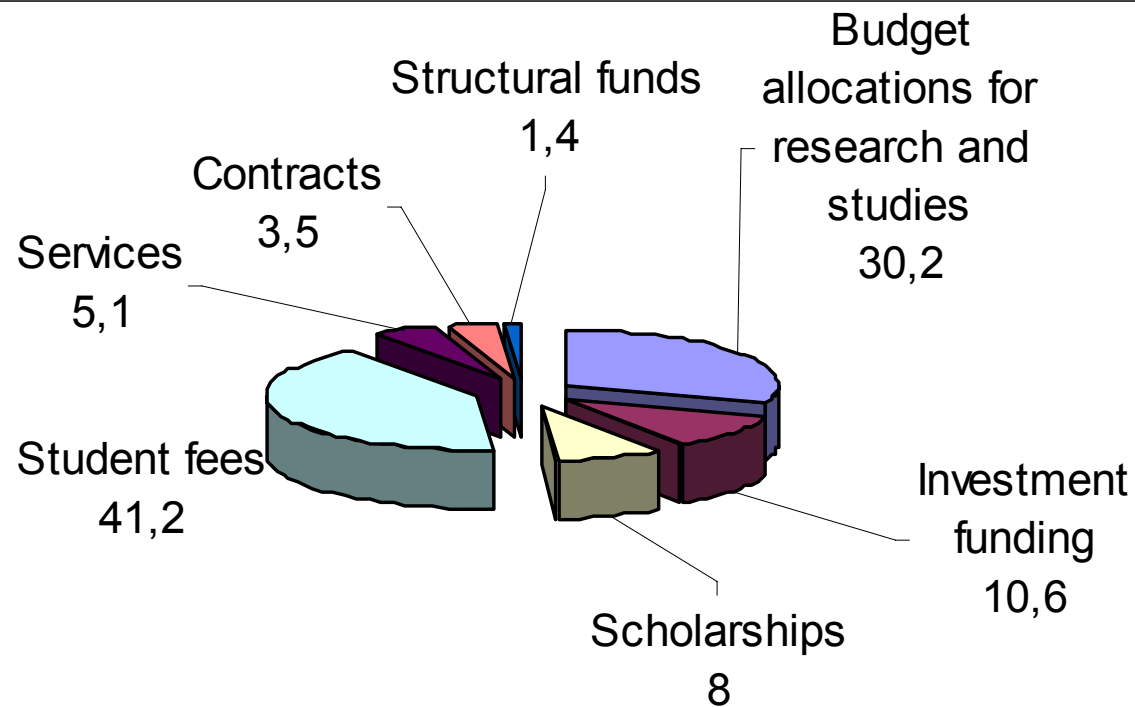
# Dynamics of research productivity, by points of Mykolas Romeris University (all fields)

---



# Mykolas Romeris University funds, 2005, percentage

---



# Governance of Universities

---

- University Council
  - External body, strategic planning, supervision and concern/care
- Senate
  - Supreme governing body: setting rules and requirements
- Rector
  - Elected by Senate, daily management, Head of the University
- Staff meeting of the Faculty
  - Election of members of Senate and Faculty Council
- Council of the Faculty
  - Decision making at the Faculty level
- Dean
  - Daily management of the Faculty
- Department
  - Primary unit for studies and research